

5.21 SMART



Maximum lifting height: 20.70 m
Maximum reach: 17.70 m
Electronically controlled hydrostatic transmission
Automatic levelling device
Pivoting stabilizers

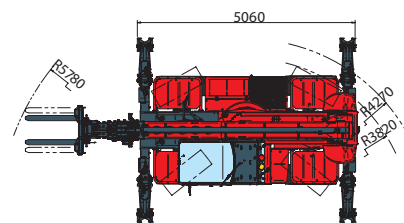
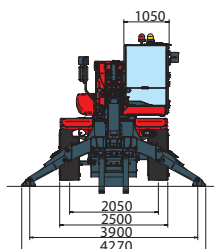
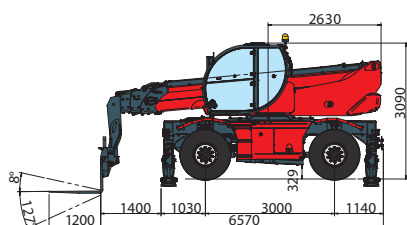
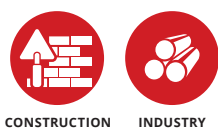
RTH 5.21 SMART

| | | | |
|---------------------------------|---|---|---|
| MACHINE MODEL | Rotary telescopic handler | RTH 5.21 SMART | |
| | Maximum lifting capacity | 4,999 kg (center of gravity 500 mm) | |
| | Maximum lifting height | 20.70 m | |
| | Rotation | 360° (continuous) | |
| ENGINE | Type | Deutz TCD 3.6 L4 - stage IV | Deutz TCD 3.6 L4 EDG - stage IIIA compliant |
| | Rated Power | 100 kW - 134 HP @ 2,200 rpm | 100 kW - 134 HP @ 2,200 rpm |
| | Maximum torque | 500 Nm at 1,600 rpm | 500 Nm at 1,600 rpm |
| | Displacement | 3.6 l | 3.6 l |
| | Cylinders | 4 in line | 4 in line |
| | Fuel | Turbocharged direct injection diesel | Turbocharged direct injection diesel |
| | Cooling System | Water - intercooler | Water - intercooler |
| TRANSMISSION | Type | Hydrostatic | |
| | Model | Bosch - Rexroth | |
| | Maximum pressure | 500 bar | |
| | Displacement | Electronically controlled variable displacement pump Variable displacement motor | |
| | Gearbox | Dropbox, 2 speeds forward-reverse | |
| AXLES AND BRAKES | Type | Axles with planetary gearboxes | |
| | Rear axle | Steering | |
| | Front axle | Oscillating and steering with levelling +/-10° | |
| | Service brake | Hydraulically operated wet multi-disk brakes on each axle | |
| | Parking brake | Hydraulic with negative action | |
| | Tyre sizes | 445/65 R22,5 | |
| PERFORMANCE | Max. travel speed | 40 km/h | |
| | Drawbar pull | 66 kN | |
| | Gradeability | 44% | |
| | Turning circle (at forks) | 5,780 mm | |
| WEIGHTS | Total unladen | 16,500 kg | |
| | Front axle unladen (boom retracted and lowered) | 8,000 kg | |
| | Rear axle unladen (boom retracted and lowered) | 8,500 kg | |
| TANK AND SYSTEM CAPACITIES | Diesel fuel tank | 180 l | 180 l |
| | AdBlue | 10 l | N/A |
| | Hydraulic fluid | 190 l | 190 l |
| | Engine oil | 8 l | 8 l |
| | Coolant | 23 l | 23 l |
| HYDRAULIC CIRCUIT FOR MOVEMENTS | Max. working pressure | 350 bar | |
| | Circuit type | Load sensing | |
| | Service pump | Bosch Rexroth - Variable displacement | |
| | Distributor for boom and turret movements | Danfoss - SIL 2 electro-proportional valve | |
| | Distributor for stabilisers | Bosch Rexroth - Electro-hydraulic actuators | |
| | Movements control | 2 no. two-axis Danfoss joysticks with deadman safety device Managed via CAN bus | |
| STANDARDS MET | EN 13849: concerning the safety of all machine controls EN 13000: concerning standards for hydraulic cranes EN 280: concerning standards for mobile elevating work platforms FOPS/ROPS EU 2016/1628: concerning engine emissions standards EN 1459-2: concerning standards for slewing variable-reach trucks | | |

The data in this brochure are informative and subject to change without notice

REV08.A

MAIN SECTORS

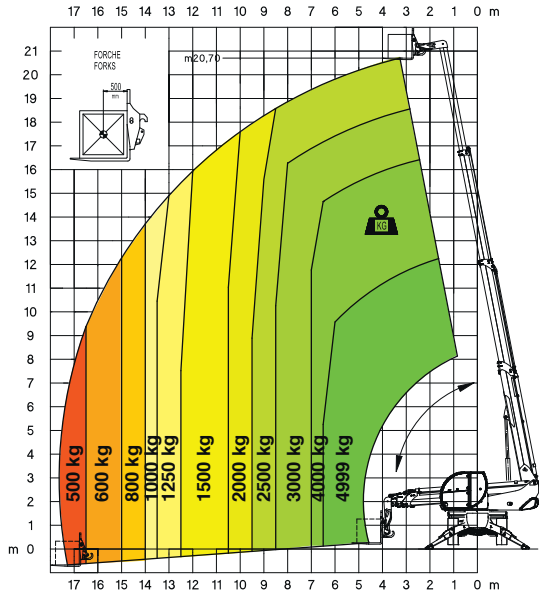


Magni Telescopic Handlers srl

Via Magellano, 22 - 41013 Castelfranco Emilia, Modena, Italia - Tel: +39 059 8630811 - Fax: +39 059 8638012
 commerciale@magnith.com - www.magnith.com

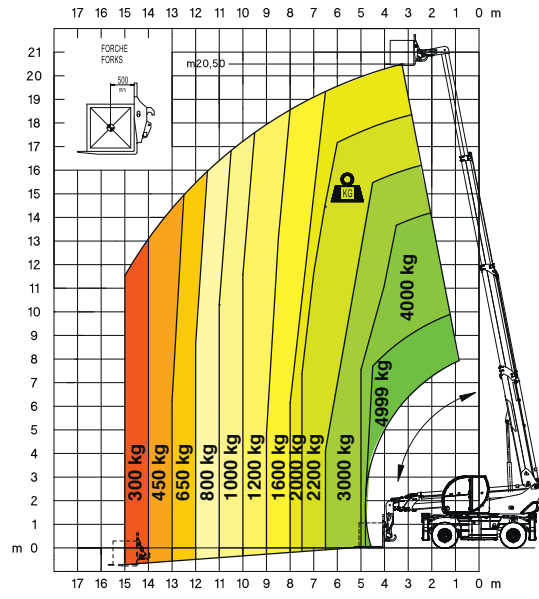
360° LOAD CHART ON FULLY EXTENDED STABILISERS

ON STABILISERS



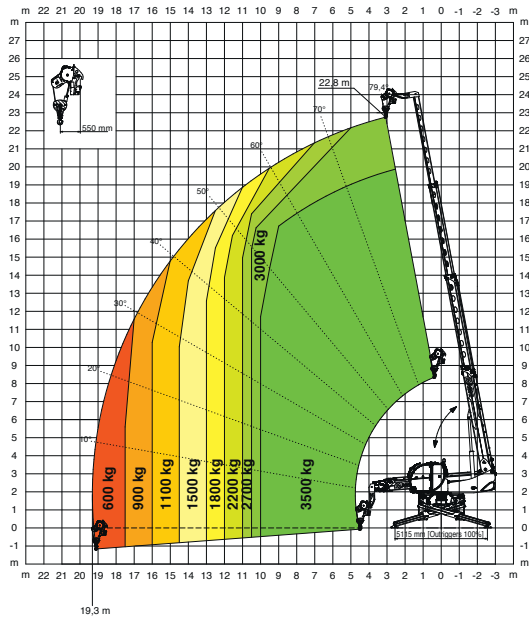
FRONT LOAD CHART ON TYRES

ON TYRES



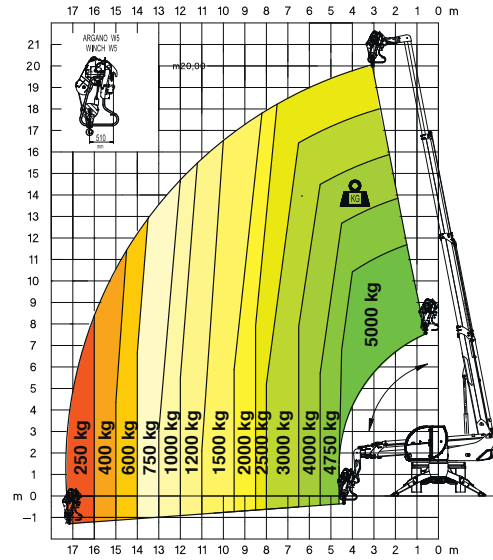
WINCH 3,500 kg

W 3,5



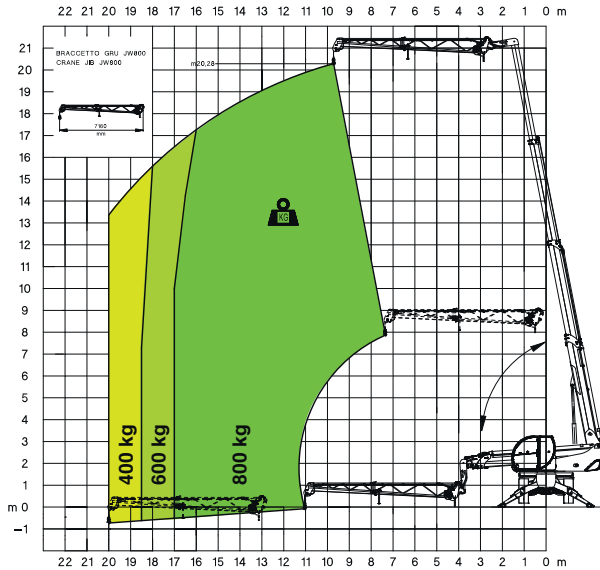
WINCH 5,000 kg

W 5



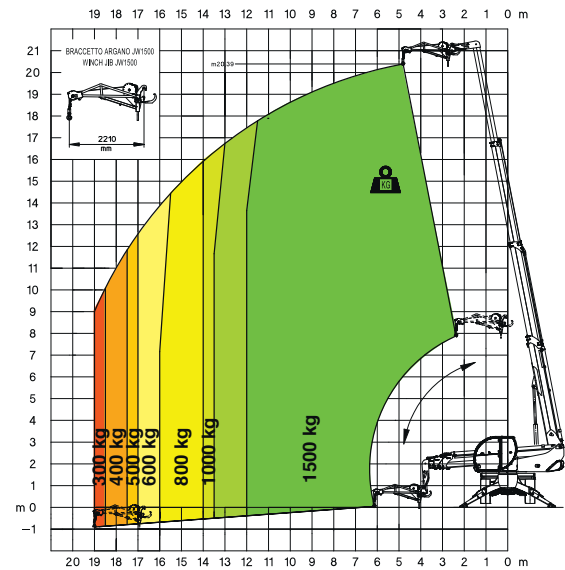
JIB WITH WINCH 800 kg

JW 800



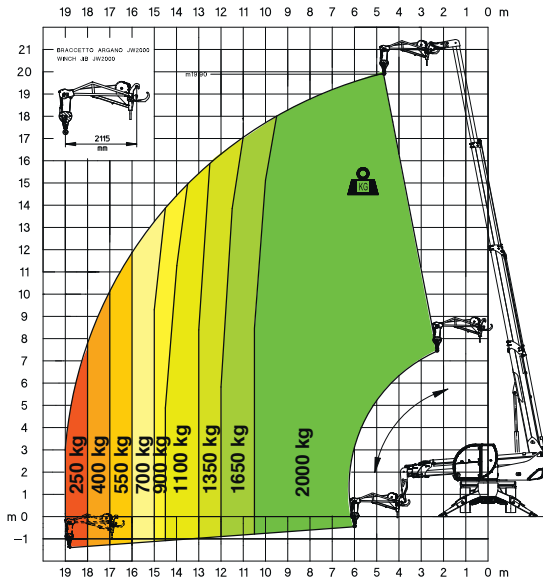
JIB WITH WINCH 1,500 kg

JW 1500



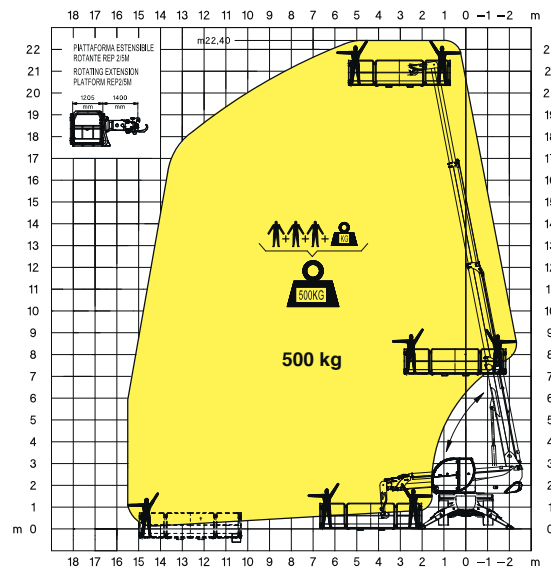
JIB WITH WINCH **2,000 kg**

JW 2000



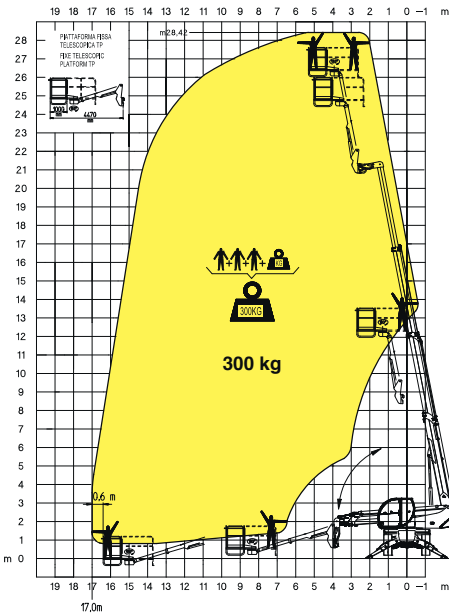
ROTATING EXTENDABLE BASKET **500 kg**

REP 2-4,5



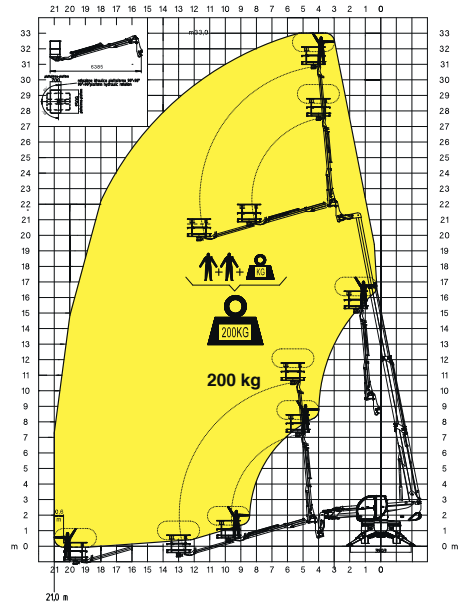
TELESCOPIC PIVOTING BASKET WITH 180° ROTATION

TP



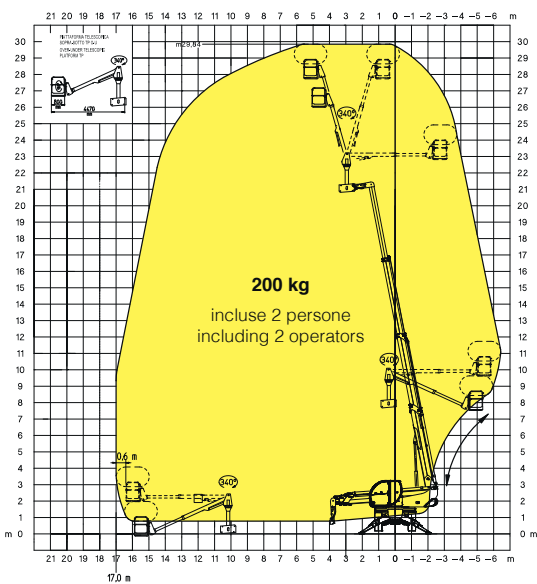
TELESCOPIC BASKET **200 kg - 10 m**

TP 2.10



TELESCOPIC PIVOTING OVER-UNDER BASKET WITH 340° ROTATION

TPO-U



TELESCOPIC PIVOTING OVER-UNDER BASKET WITH 340° ROTATION

TPO-U

