

5.23_{SMART}



Maximum lifting height: 22.80 m
Maximum reach: 19.50 m
Electronically controlled hydrostatic transmission
Automatic levelling device
Pivoting stabilizers

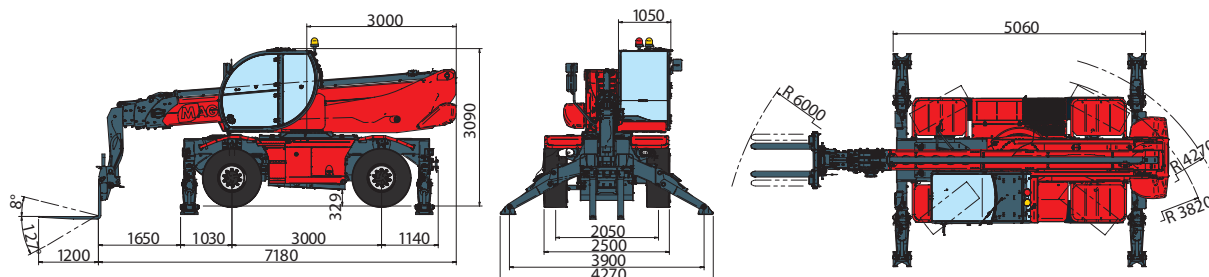
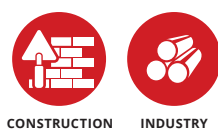
RTH 5.23 SMART

MACHINE MODEL	Rotating telescopic handler	RTH 5.23 Smart	
	Maximum lifting capacity	4,999 kg (center of gravity 500 mm)	
	Maximum lifting height	22.80 m	
ENGINE	Type	Deutz TCD 3.6 L4 - stage IV	Deutz TCD 3.6 L4 EDG - stage IIIA compliant
	Rated power	100 kW - 134 HP @ 2,200 rpm	100 kW - 134 HP @ 2,200 rpm
	Maximum torque	500 Nm @ 1,600 rpm	500 Nm @ 1,600 rpm
	Displacement	3,6 l	3,6 l
	Cylinders	4 in line	4 in line
	Fuel	Diesel direct injection turbocharged	Diesel direct injection turbocharged
	Cooling system	Water - intercooler	Water - intercooler
TRANSMISSION	Type	Hydrostatic	
	Model	Bosch - Rexroth	
	Maximum pressure	500 bar	
	Displacements	Variable displacement pump electronically controlled Variable displacement motor	
	Gear box	2 speeds forward-reverse	
AXLES AND BRAKES	Type	Axles with epicyclic reduction gear	
	Rear axle	Oscillating and steering with hydraulic locking	
	Front axle	Oscillating and steering with levelling +/- 10°	
	Service brake	Hydraulically activated, oil-immersed multi-disc type on each axle	
	Parking brake	Hydraulic with negative action	
	Tyres dimensions	445/65 R 22,5	
PERFORMANCE	Max. travel speed	40 km/h	
	Drawbar pull	66 kN	
	Gradeability	44%	
	Turning radius (end of forks)	6,000 mm	
WEIGHTS	Total unladen	16,830 kg	
	Front axle unladen (boom retracted and lowered)	7,330 Kg	
	Rear axle unladen (boom retracted and lowered)	9,500 kg	
TANK CAPACITIES	Fuel tank	190 l	190 l
	AdBlue	10 l	N/A
	Hydraulic oil tank	190 l	190 l
	Engine oil tank	8 l	8 l
	Cooling liquid	20 l	20 l
HYDRAULIC CIRCUIT	Max. operating system pressure	350 bar	
	Circuit type	Load sensing	
	Service pump	Bosch Rexroth - Variable displacement	
	Controls for boom and turret movements	Danfoss - Electroproportional valve SIL 2	
	Controls for stabilizers	Bosch Rexroth - Electro-hydraulics controls	
	Movements control	2 joystick Danfoss with two shafts with dead man safety device - Management with CAN bus technology	
CONFORMITY TO STANDARDS	EN 13849: concerning the safety of all machine controls EN 13000: concerning standards for hydraulic cranes EN 280: concerning standards for mobile elevating work platforms FOPS/ROPS EU 2016/1628: concerning engine emissions standards EN 1459-2: concerning standards for slewing variable-reach trucks		

The data in this brochure are informative and subject to change without notice

REV08.A

MAIN SECTORS

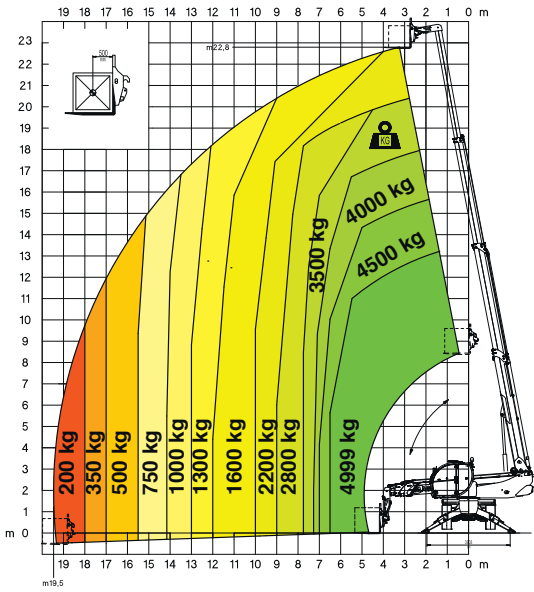


Magni Telescopic Handlers srl

Via Magellano, 22 - 41013 Castelfranco Emilia, Modena, Italia - Tel: +39 059 8630811 - Fax: +39 059 8638012
 commerciale@magnith.com - www.magnith.com

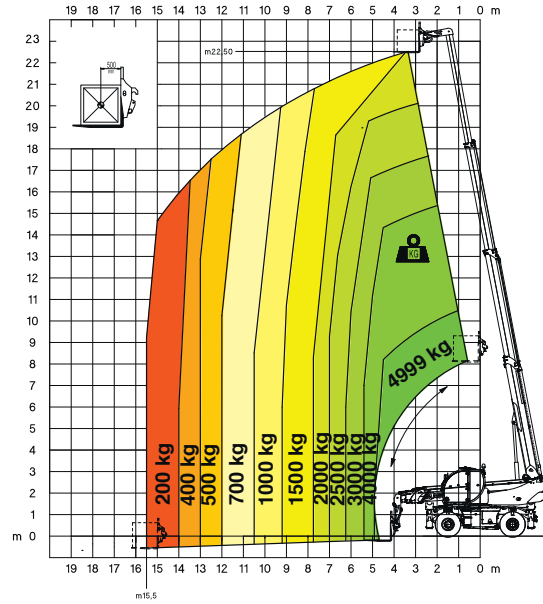
**360° LOAD CHART
ON FULLY EXTENDED STABILISERS**

ON STABILISERS



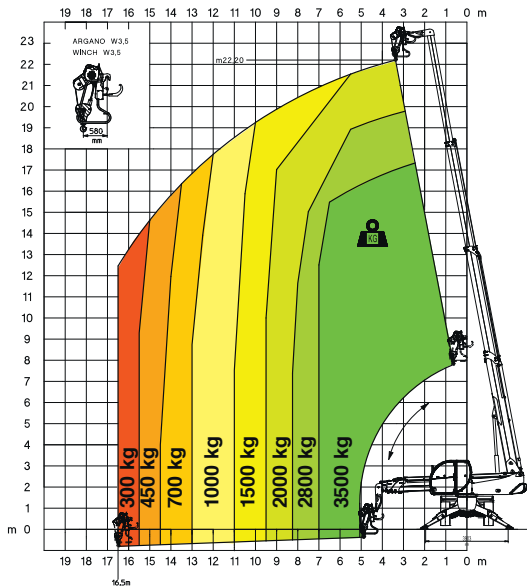
FRONT LOAD CHART ON TYRES

ON TYRES



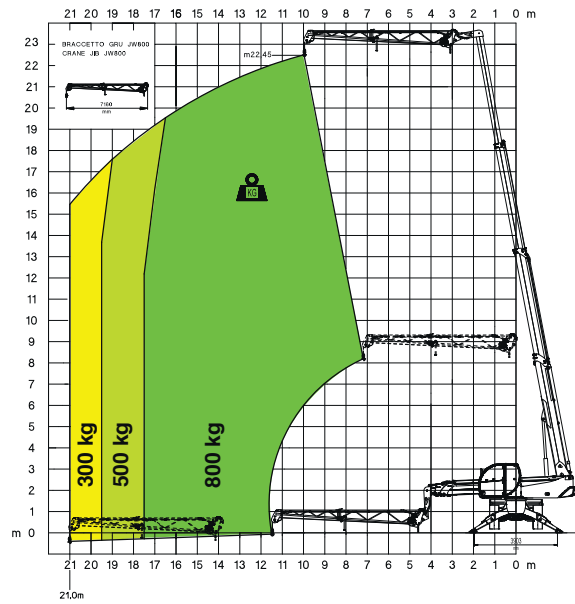
WINCH 3,500 kg

W 3,5



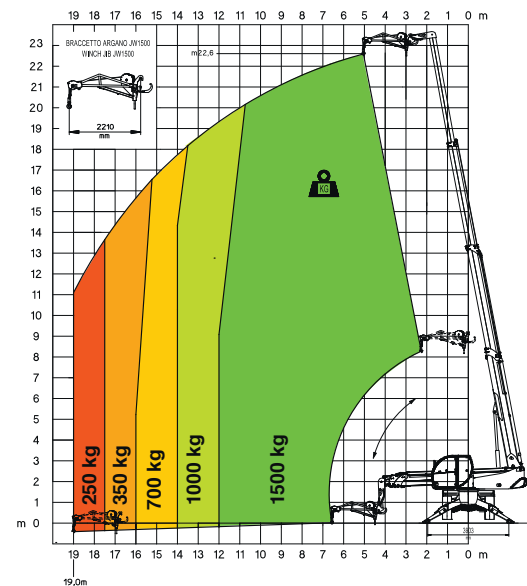
JIB WITH WINCH 800 kg

JW 800



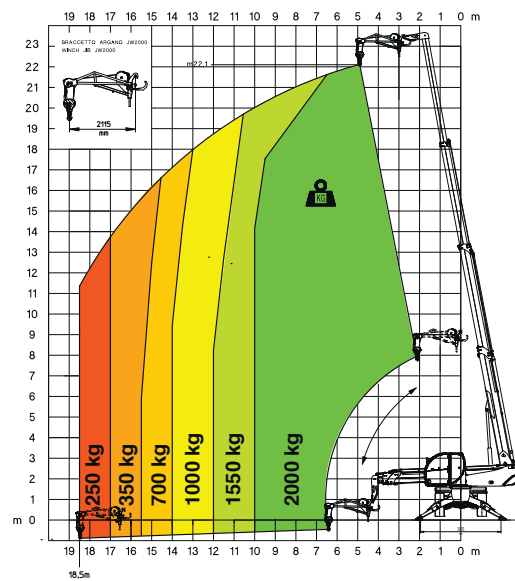
JIB WITH WINCH 1,500 kg

JW 1500



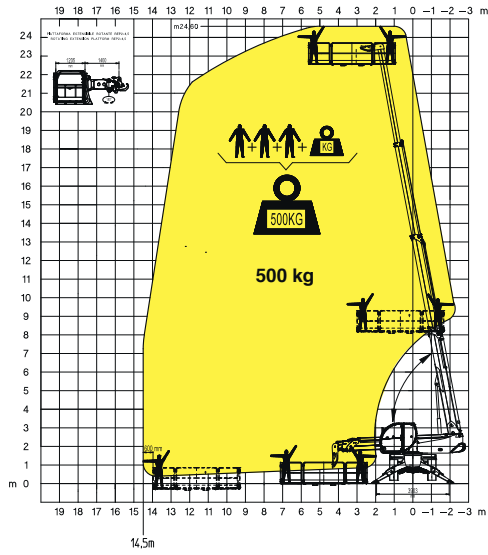
JIB WITH WINCH 2,000 kg

JW 2000



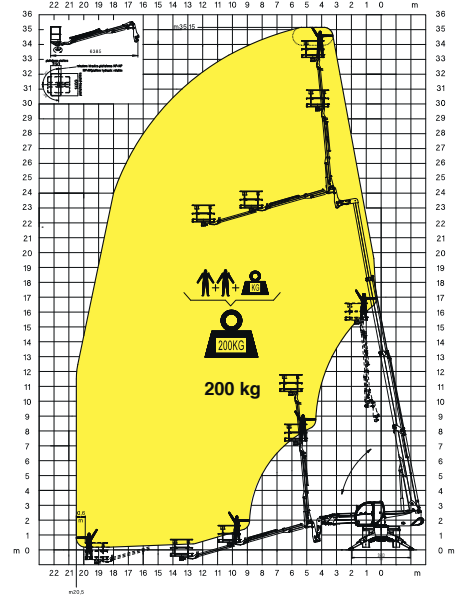
ROTATING EXTENDABLE BASKET **500 kg**

REP 2-4,5



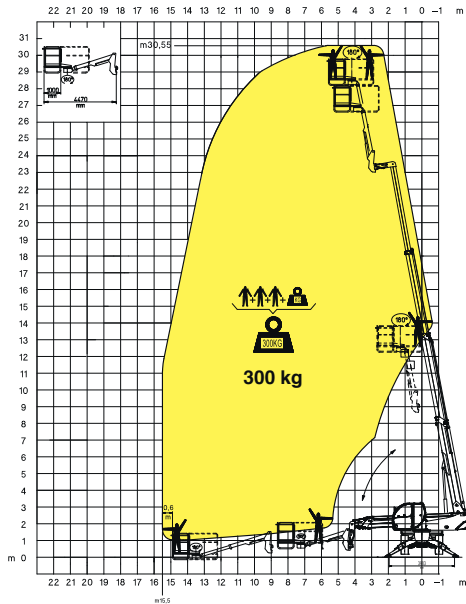
TELESCOPIC BASKET **200 kg - 10 m**

TP 2.10



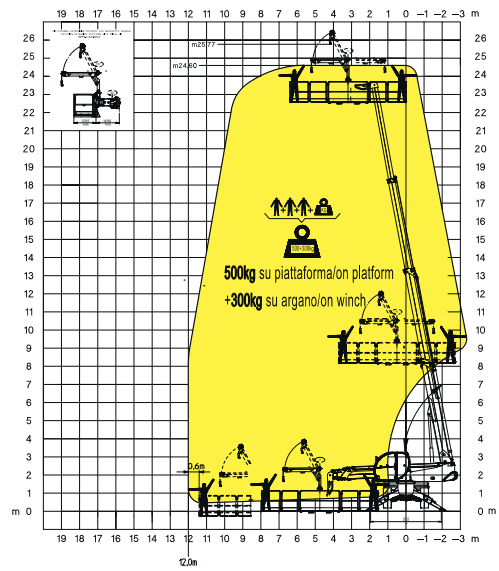
TELESCOPIC PIVOTING BASKET WITH 180° ROTATION

TP



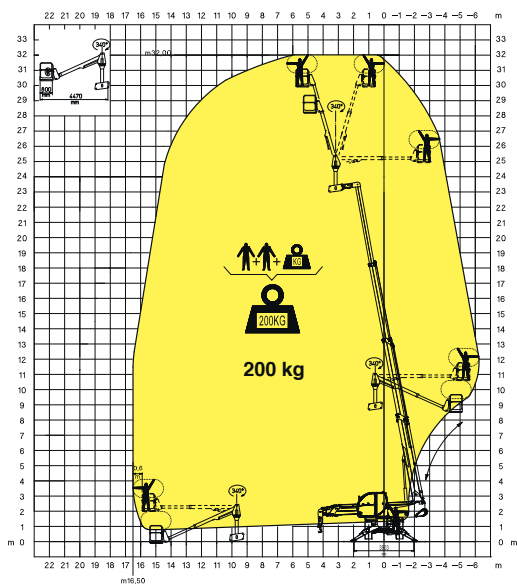
BASKET 6,5 m **500 kg**
300 kg WITH WINCH

REP 2-6,5 W0,3



TELESCOPIC PIVOTING OVER-UNDER BASKET WITH 340° ROTATION

TPO-U



TELESCOPIC PIVOTING OVER-UNDER BASKET WITH 340° ROTATION

TPO-U

