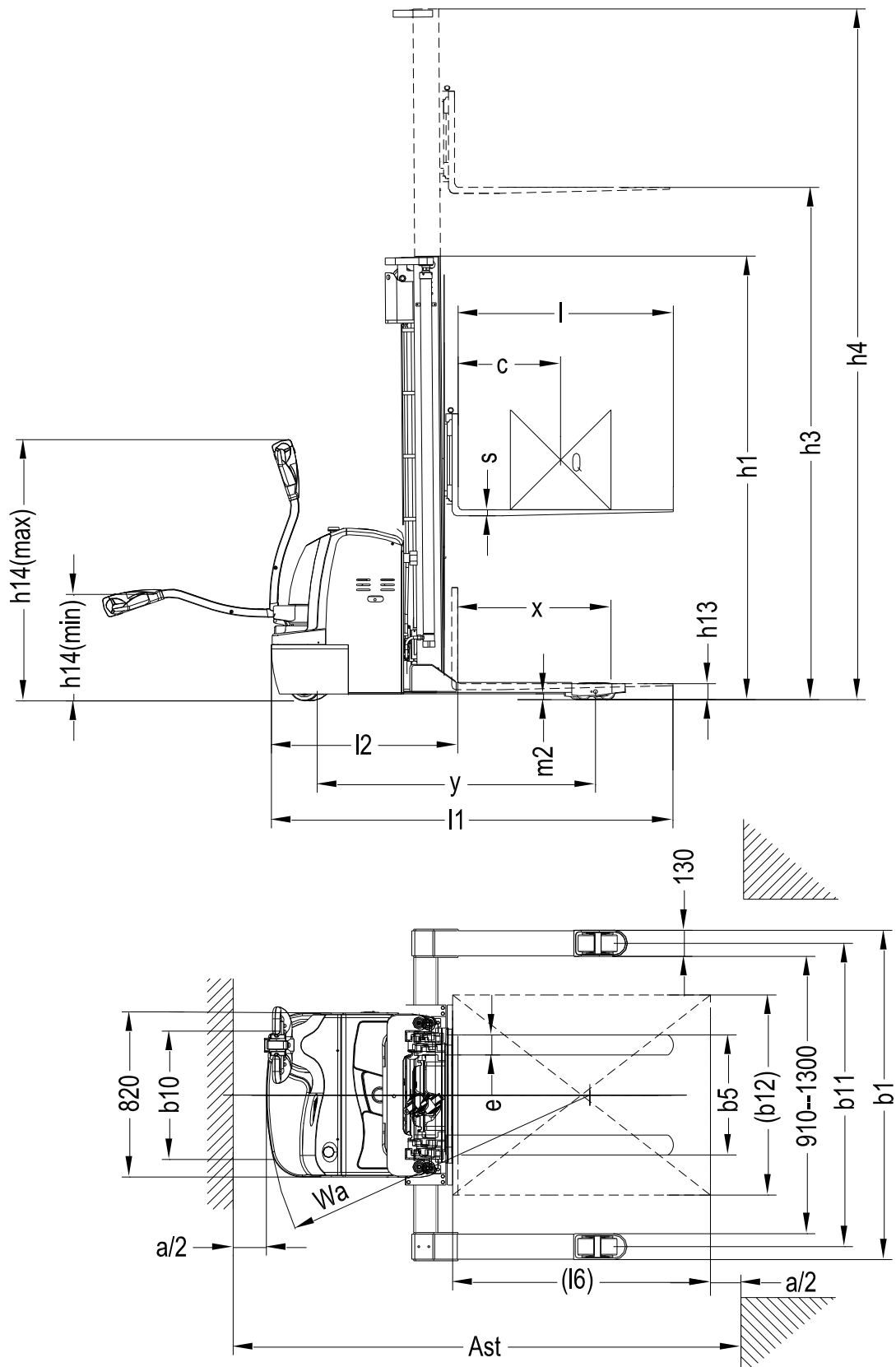


## 15EST Parameters

### 1. 15EST Outline drawing



## 15EST Electric stacker

Characteristics	1.1	Manufacturer(abbreviated)		Hyundai
	1.2	Model		15EST
	1.3	Driving model : Electric (Storage		Electric (storage battery)
	1.4	Driving model ( Manual, Walking,		Walking
	1.5	Rated load	Q(kg)	1500
	1.6	Load center distance	c(mm)	600
	1.8	Front overhang	x(mm)	677
	1.9	Tread	Y(mm)	1420
	Weight	2.1	Service weight (with battery)	kg
		Axle load, front/rear, laden		1415/1460/1500
2.2		Axle load, front/rear, unladen	kg	1470/1310
2.3		Wheels (rubber, high elasticity,	kg	910/370
Wheel chassis	3.1	Wheel dimension, front		Polyurethane
	3.2	Wheel dimension, rear		φ250×70
	3.3	Additional wheel(dimension)		φ80×84
	3.4	Wheel number, front/rear ( x =		φ150×60
	3.5	Tread, front		1x+2/4
	3.6	Tread, rear	b <sub>10</sub> (mm)	580
	3.7	Height of mast, lowered	b <sub>11</sub> (mm)	1040-1430
Dimension	4.2	Free lift height (optional)	h <sub>1</sub> (mm)	1805/2055/2205/2305/2120/2280/2480
	4.3	Lift height	h <sub>2</sub> (mm)	1300/1550/1700/1800/1570/1740/1940·
	4.4	Max. height of mast, extended	h <sub>3</sub> (mm)	2500/3000/3300/3500/4500/5000/5600
	4.5	Initial lift	h <sub>4</sub> (mm)	3025/3525/3825/4025/5100/5580/6180
	4.9	Min. /Max. height of operation handle in	h <sub>14</sub> (mm)	670/1300
	4.15	Height, lowered	h <sub>13</sub> (mm)	70
	4.19	Overall length	l <sub>1</sub> (mm)	1980/2060
	4.20	Length to fork face	l <sub>2</sub> (mm)	915
	4.21	Overall width of truck body	b <sub>1</sub> (mm)	1170-1560
	4.22	Fork dimension	s/e/l(mm)	40/100/1070(1150)
	4.25	Overall width of fork	b <sub>5</sub> (mm)	200--800
	4.32	Wheelbase ground distance	m <sub>2</sub> (mm)	35
	4.33	Aisle width, with pallet 1000x1200	A <sub>5</sub> (mm)	2480
	4.34	Aisle width, with pallet 800x1200	A <sub>5</sub> (mm)	2465
	4.35	Turning radius	W <sub>a</sub> (mm)	1612
Performance Data	5.1	Traveling speed, laden/unladen	Km/h	5.8/6
	5.2	Lifting speed, laden/unladen	m/s	0--0.14/0--0.23
	5.3	Descending speed, laden/ unladen	m/s	0--0.39/0--0.26
	5.8	Max. gradeability, laden/unladen	%	8/15
	5.10	Traveling brake		Electromagnetic brake
Motor	6.1	Driving motor power	kW	1.5(AC)
	6.2	Lifting motor power	kW	3.2
	6.4	Battery voltage/rated capacity	V/Ah	24/300
	6.5	Battery weight	kg	260
		Battery dimension (LXWXH)	mm	675×254×540
Additional data	8.4	Noise level at operator's ear, according to DIN12053	dB(A)	70