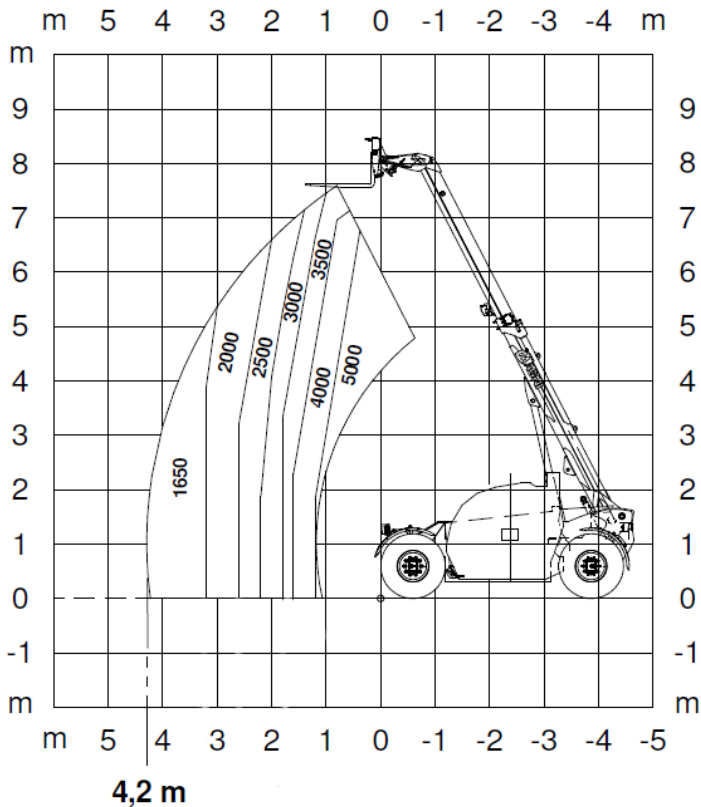
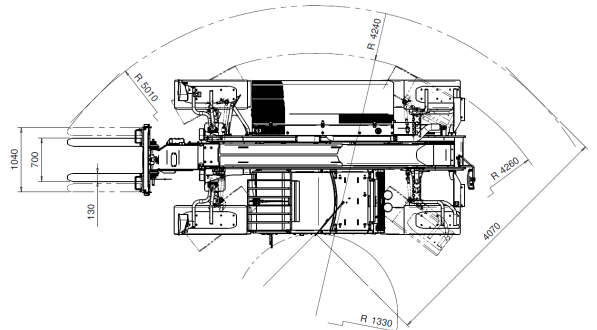
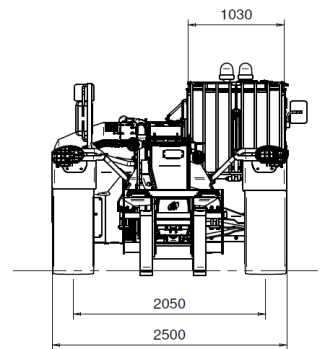
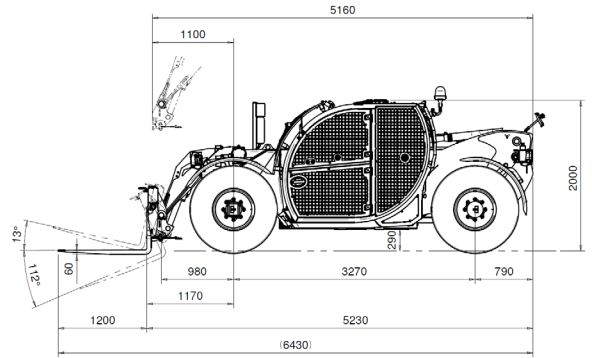


# TH5.8

UNDERGROUND



LOAD CHART WITH FORKS

# TH5.8

UNDERGROUND

MACHINE MODEL	Telescopic handler	TH 5.8 UNDERGROUND
	Maximum lifting capacity	5,000 kg (center of gravity 600 mm)
	Maximum lifting height	7.60 m
	Maximum machine height	2.00 m
ENGINE	Type	<b>Deutz TCD 3,6 L4 EDG</b>
	Rated power	74,4 kW (97,7 hp) @ 2,200 rpm
	Maximum torque	410 Nm @ 1,600 rpm Dis-
	placement	3,6 l
	Cylinders	4 in line
	Engine configuration	Diesel direct injection turbocharged
	Cooling system	Water – intercooler
TRANSMISSION	Type	Hydrostatic
	Model	Bosch Rexroth
	Maximum pressure	470 bar
	Displacements	Electronically controlled variable displacement pump Variable displacement motor
	Gear box	Dropbox, 2 speeds
AXLES AND BRAKES	Axle type	Axles with planetary gearboxes
	Rear axle	Oscillating and steering with hydraulic locking +/- 7°
	Front axle	LS dynamic power steering
	Brake type	Mining fail-safe braking system
	Service brake	Hydraulic multi-disk power brake
	Service brake type	Dual acting master cylinder with independent lines to multi-disk brakes in oil bath on front & rear axles.
	Service brake control	Foot-operated for front & rear axles
	Parking brake /Emergency brake type	Spring applied hydraulic release (SAHR) on front & rear axles.
	Parking brake /Emergency brake control	Electro-hydraulic. Cabin switch. Fail-safe automatic application on engine shut-down.
	Tyres dimensions	16/70-24
Operator test & warning	Warning: low brake pressure, residual service, brake pressure, loss of driver presence.	
PERFORMANCE	Max. travel speed	35 km/h
	Drawbar pull	76 kN
	Gradeability	65%
	Turning radius (end of forks)	5,010 mm
WEIGHTS	Total unladen	8,600 kg
	Front axle unladen (boom retracted and lowered)	4,280 kg
	Rear axle unladen (boom retracted and lowered)	4,320 kg

# TH5.8

UNDERGROUND

TANK AND SYSTEM CAPACITIES	Fuel tank	120 l
	AdBlue	n.a.
	Hydraulic oil tank	90 l
	Engine oil tank	9 l
	Cooling liquid	20 l
HYDRAULIC CIRCUIT FOR MOVEMENTS	Max. operating system pressure	350 bar
	Circuit type	Load sensing
	Service pump	Bondioli & Pavesi – Variable displacement
	Controls for boom	Danfoss – SIL 2 electro-proportional valve
	Controls for stabilizers	Bosch Rexroth – Electro-hydraulic actuators
	Movements control	1 joystick Danfoss with FNR switch and dead man safety device - Management with CAN bus technology
CONTROL SYSTEMS & WARNINGS	Stability control	RCL Rated Capacity Limiter
GENERAL PROTECTIONS	Cabin	ROPS ISO:3471 - FOPS ISO: 3449 Level 1 and 2
	Body	Lights & cabin guards (on all cabin sides and under cabin roof) A/C condensor guard
	Exhaust	Catalytic Converter/Purifier: 50 PPM
ERGONOMICS, ACCESS, VISIBILITY	Work lights	LED 2000 Lux (2x boom) LED 10000 Lux (1xfront 1xrear)
	Other	Fwd/rev directional lights (mounted on all the 4 cabin sides and on the 4 frame lights). Air conditioning
	Markings, Signs, Labelling	Warning & danger, controls & pre-op, reflective hi-visibility, access & maintenance point.
ISOLATION POINTS & MISCELLANEOUS	Emergency stops	Cabin x1 - External x2
	Isolation	Dual pole battery + starter isolators Fuel isolation valve Jump start receptacle, all inside engine bay
	Miscellaneous	Loose wheel nut indicators Easy Connect System – Attachment hydraulic hoses Wheel chocks x2 Boom cylinder lock
	Extinguisher(s)	external 2x6kg powder extinguishers
STANDARD MET	EN 1459-1: concerning standards for variable-reach trucks EN 13000: concerning standards for hydraulic cranes EN 280: concerning standards for mobile elevating work platforms FOPS/ROPS EU 2016/1628: concerning engine emissions standards ISO 3450-2011/1755/19296 ISO 5010: 1992 concerning emergency steering ANSI A92.20 ANSI B56.6	