



ADVANTAGE

MAGNI VS. ARTICULATED CRANES

This document outlines the advantages for using a 360 Degree rotating telehandler vs. a traditional articulated crane. The Magni is considered the Swiss army knife of equipment on construction sites across Australia. See for yourself..

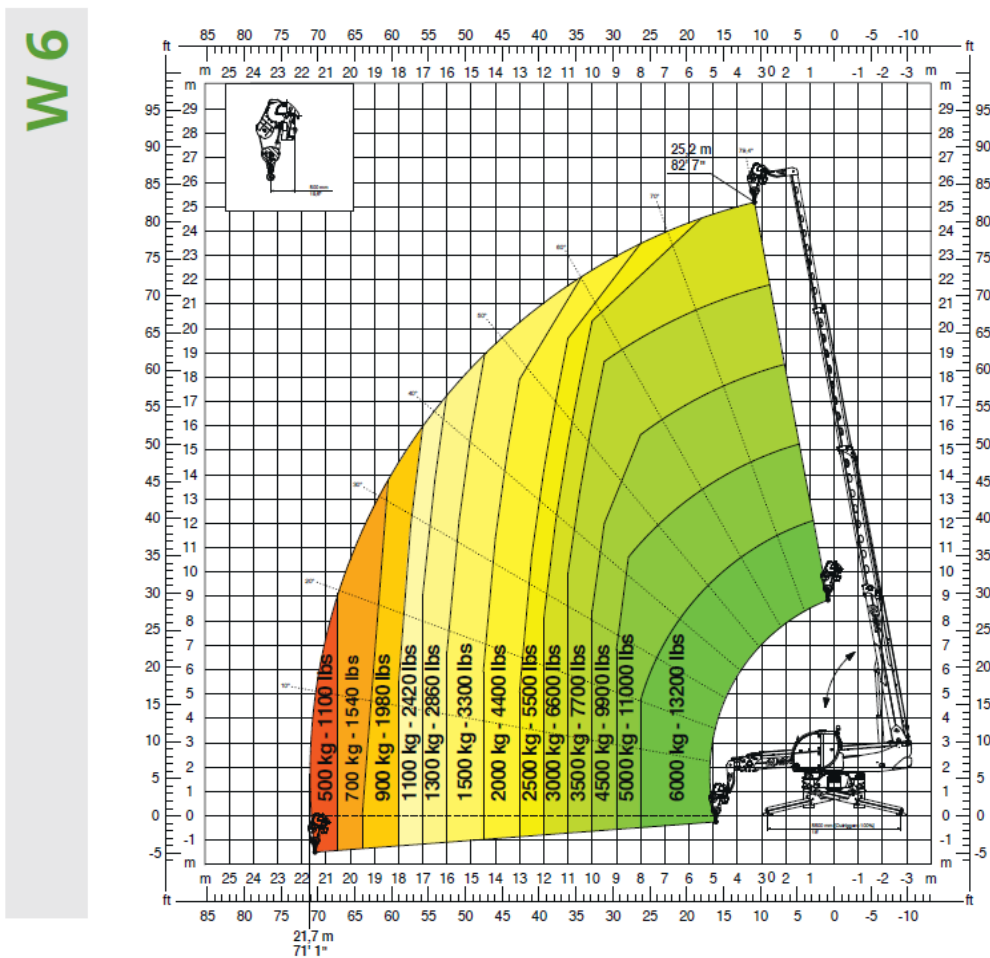
Lift Equipt PTY LTD
UNIT 4 Sobek Pass
Bibra Lake WA 6163
1300 4444 22
sales@liftequipt.com.au

LOAD CHART COMPARISON

OUTRIGGERS

Telehandler hire can be complicated and frustrating if you are not dealing with the right supplier. Lift Equipt have a wide range of well-maintained telehandlers for hire or rent and are experts when it comes to lifting and shifting. Get expert advice on rotational telehandlers by contacting our team today.

WINCH **6,000 kg**

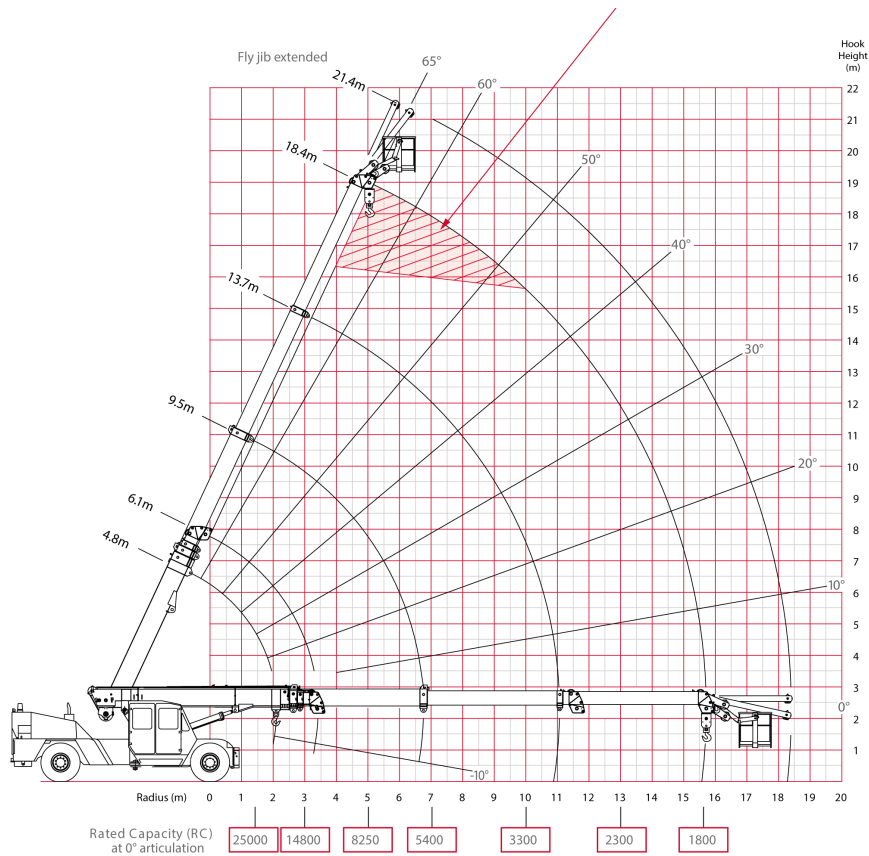


LOAD CHART

- 9 meter Radius 4500kg
- 12 meter Radius 3000kg
- 15 meter Radius 1500kg

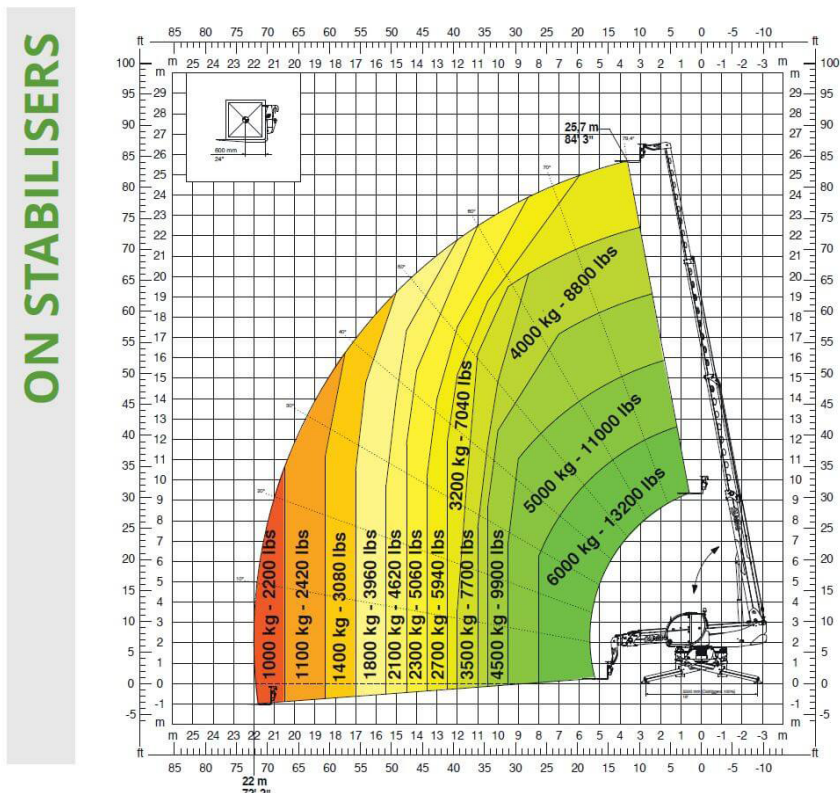
LOAD CHART OPERATING COMPARISON

Franna Mac 25 - 40 degree operation



Magni RTH 6.26 360 degree

360° LOAD CHART ON FULLY EXTENDED STABILISERS



MAC 25 FRANNA CRANE LOAD CHART

RAD	BOOM LENGTH TO HEAD SHEAVES - 3rd BOOM RETRACTED														3rd BOOM EXTENDING				RAD
	6.12	6.50	7.00	7.50	8.00	8.50	9.00	9.50	10.00	11.00	12.00	13.00	14.00	15.00	16.00	17.00	18.42		
m	kg	kg	kg	kg	kg	kg	kg	kg	kg	kg	kg	kg	kg	kg	kg	kg	kg	m	
1.4	25000	25000	25000	25000	24500	23950	23550											1.4	
	24800	24800	24800	24750	24550	24000	23600												
2.0	49	52	56	58	61	63	65											2.0	
	22950	22950	22900	22850	22800	22800	22750	22750											
	20550	20550	20500	20450	20400	20350	20350	20300											
2.5	41	45	49	52	55	58	60	62	64									2.5	
	18100	18100	18050	18000	18000	17950	17950	17900	17900	17850									
	17300	17300	17250	17250	17200	17200	17150	17150	17150	17100									
	16150	16150	16100	16100	16050	16050	16000	16000	15950	15100									
3.0	33	38	43	47	51	54	56	58	60	64								3.0	
	14800	14800	14800	14800	14750	14750	14700	14700	14700	14650	14550								
	14200	14150	14150	14150	14100	14100	14050	14050	14050	14000	13450								
	13200	13200	13200	13150	13150	13100	13100	13100	13050	12650	11450								
3.5	22	30	36	41	46	49	52	54	57	60	64							3.5	
	12500	12450	12450	12450	12450	12400	12400	12400	12350	12350	12300	12300							
	11950	11900	11900	11900	11900	11850	11850	11850	11800	11800	11750	11600							
	11100	11100	11100	11050	11050	11050	11000	11000	11000	10850	9900	9100							
4.0	(3.5)	19	28	35	40	44	47	50	53	57	61	63						4.0	
	11100	10700	10700	10700	10700	10700	10650	10650	10650	10600	10600	10600	10550						
	10600	10200	10200	10200	10200	10200	10200	10150	10150	10150	10100	10100	10100						
	9850	9500	9500	9500	9500	9500	9450	9450	9450	9400	8750	8050	9400						
5.0	(3.9)	18	27	34	39	43	46	49	54	58	61	63						5.0	
	9650	8500	8250	8250	8250	8250	8250	8200	8200	8200	8150	8150	8200	8300	8400				
	9200	8100	7850	7850	7850	7850	7850	7850	7800	7800	7800	7750	7850	7900	7950				
	8550	7500	7250	7250	7250	7250	7250	7250	7250	7050	6500	6100	5800	5600	5400				
6.0	(4.4)	(4.9)	17	26	32	37	40	46	51	55	58							6.0	
	7550	6750	6600	6600	6600	6600	6600	6550	6550	6550	6600	6700	6750	6850					
	7200	6450	6250	6250	6250	6250	6250	6250	6250	6250	6200	6300	6350	6450	6400				
	6650	5950	5800	5800	5800	5800	5800	5750	5450	5100	4850	4700	4550	4400					
7.0	(5.4)	(5.9)	16	24	30	38	44	49	53									7.0	
	6100	5550	5400	5400	5400	5400	5400	5400	5400	5400	5450	5550	5600	5700					
	5800	5250	5150	5150	5150	5150	5150	5100	5100	5100	5150	5250	5350	5400					
	5350	4850	4750	4750	4700	4700	4700	4700	4700	4350	4200	4050	3950	3800					
8.0	(6.4)	(6.9)	15	29	37	42	47											8.0	
	5050	4550	4550	4550	4550	4550	4550	4600	4650	4750	4800								
	4800	4300	4300	4300	4300	4300	4300	4350	4400	4500	4600								
	4400	3950	3950	3950	3850	3650	3550	3450	3350										
9.0	(7.4)	14	27	35	41	45	49	52	56									9.0	
	4250	3850	3850	3850	3900	4000	4050	4150											
	4000	3650	3650	3650	3700	3750	3850	3950											
	3650	3300	3300	3300	3250	3150	3050	2950											
10.0	(8.4)	14	26	34	39	44	47	52										10.0	
	3600	3300	3300	3350	3450	3500	3600												
	3400	3100	3100	3150	3250	3300	3400												
	3100	2800	2800	2900	2850	2750	2650												
11.0	(9.4)	13	25	33	38	42	47											11.0	
	3100	2850	2900	3000	3050	3150													
	2950	2700	2750	2850	2900	3000													
	2650	2400	2500	2550	2500	2400													
12.0	(10.4)	13	24	32	37	43												12.0	
	2700	2550	2650	2700	2800														
	2550	2400	2450	2550	2600														
	2250	2150	2200	2300	2200														
13.0	(11.4)	12	24	31	38													13.0	
	2400	2300	2400	2450															
	2250	2150	2250	2300															
	2000	1950	2000	2050															
14.0	(12.4)	12	23	32														14.0	
	2200	2100	2200																
	1850	1750	1850																
	(13.4)	12	25																
15.0		2000	1950															15.0	
	1650	1650																	
	(14.4)	17																	
	1800																		
15.71		1450																15.71	
	(15.8)																		
	12.00	13.00	14.00	15.00	16.00	17.00	18.42												

WINCH RATED CAPACITY

SINGLE PART	4200
TWO PARTS	8400
FOUR PARTS	16800
SIX PARTS	25000

UNITS:

- ANGLES IN DEGREES
- LENGTHS IN METRES
- LOAD IN KILOGRAMS

KEY:

8250	RC @ ARTIC:	0°	PITCH:	-2.3	ROLL:	-1.0
7850	RC @ ARTIC:	25°	PITCH:	-2.3	ROLL:	-3.0
7250	RC @ ARTIC:	40°	PITCH:	-2.3	ROLL:	-3.5
17	BOOM ANGLE					
(5.9)	RADIUS AT ZERO BOOM ANGLE					

Note: Pitch & Roll angles indicated are representative of lifts based on firm level ground with tyres at specified pressures.

COMPARISON CHART	MAC 25 Franna	RTH 6.26 Magni
Maximum Capacity	25 000 kg	6 000 Kg
Capacity At Max Reach	1500Kg @ 18.4 m	500kg @ 22m
Capacity At Max Height	1500 Kg @ 18.4 m	3000 Kg @ 25 m

BENEFITS

- 360 Degree Rotational
- Cost effective compared to a Franna MAC 25
- Smaller and more maneuverable around sites
- Easily transported
- More than just a crane
- Eliminate or reduce plant on any project (3 in 1 Machine)
- Remote controlled for safety when required
- Boom length of up to 51 meters.
- Lifting capacity's up to 13t our performing slewing cranes of up to 30t

**WE HELP CONSTRUCTION
COMPANIES THRIVE**

ELIMINATE UNSAFE LIFTS

Dimension	FRANNA MAC 25	MAGNI RTH 6.26
Overall Height	3 075 m	3 120 m
Overall Length	9 985 m	9 032 m
Overall Width	2 720 m	2 544 m
Overall Weight	23 000 kg	20 050 Kg

ADVANTAGES FOR USING A 360 DEGREE ROTATING TELEHANDLER VS ARTICULATED CRANE

FRANNA MAC 25

- 40 Degree operation
- Tipping concern when articulating
- Doesn't recognize attachments
- Limited attachments
- No Power line safety device
- Forward facing only
- No Remote Diagnostics
- Approx., Purchase Price \$585,00 – \$650,000
- Dedicated Crane Only
- Hydraulic Boom 18.4 meters Max
- Turning Cercle is limited
- Power Transmission

MAGNI RTH 6.26

- 360 degree operation
- LMI eliminating tipping 360 degree
- Automatic recognition with attachments
- Load limiting and speed control
- Power line protection device
- Visibility from cabin is far superior
- Remote Diagnostics
- Approx., Purchase Price \$395,00 – \$415,000
- Multi Use Machine and Reduce over heads
- Hydraulic Boom 51 meters Max
- 3way steering system, Crab, Four way, Front
- Hydrostatic drive safety for braking
- Wet Disk Brakes – Automatically apply

**THE MOST EFFICIENT
WAY TO RUN YOUR
CONSTRUCTION
PROJECT**





MULTIPLE WORLD RECORDS

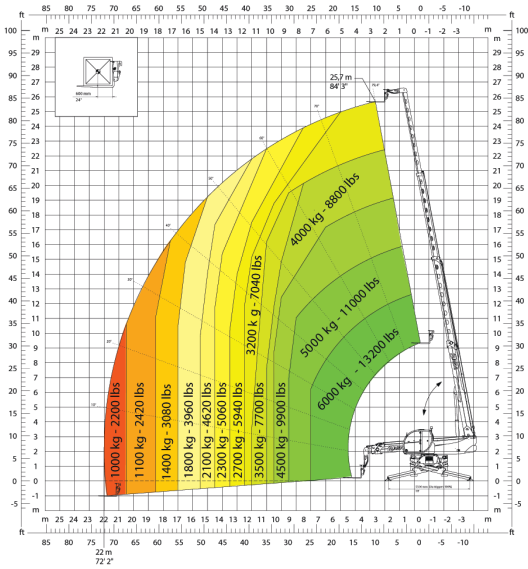
6.26SH



Maximum lifting height: 25.70 m
Maximum reach: 22.00 m
Electronically controlled hydrostatic transmission
Automatic levelling device
Scissors stabilizers

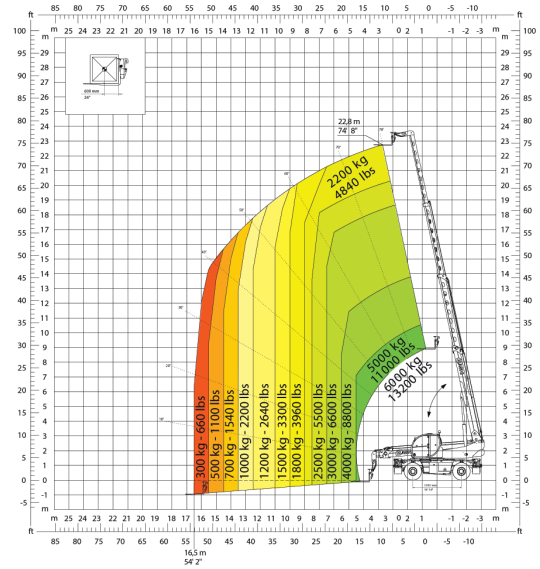
360° LOAD CHART
ON FULLY EXTENDED STABILISERS

ON STABILISERS



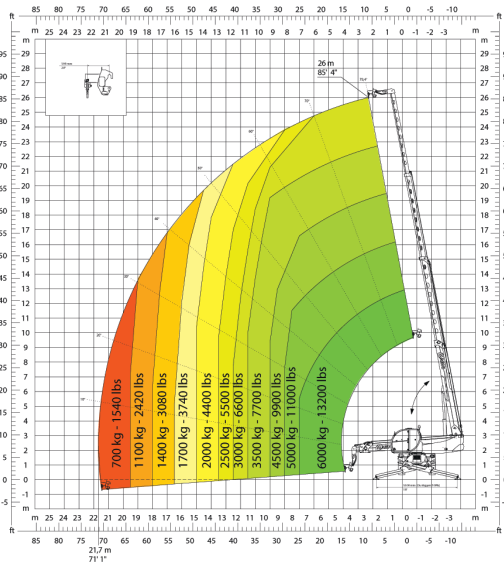
FRONT LOAD CHART ON TYRES

ON TYRES



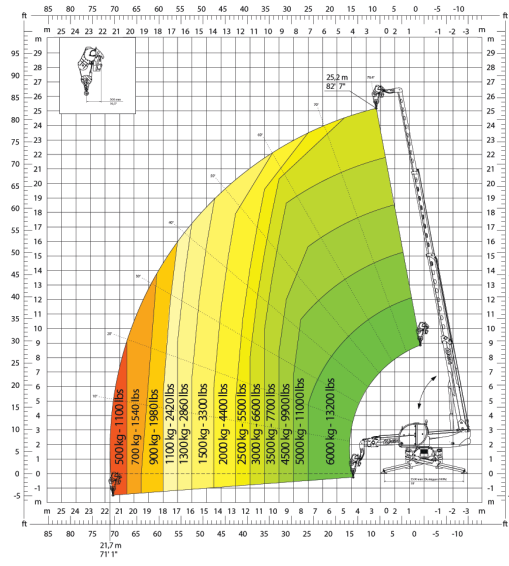
HOOK 6,000 kg

H 6



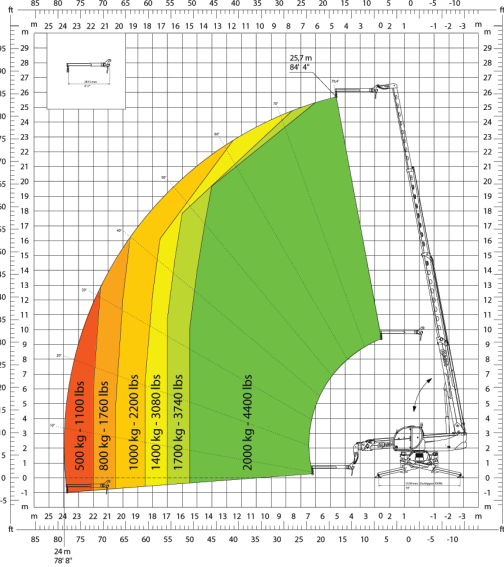
WINCH 6,000 kg

W 6



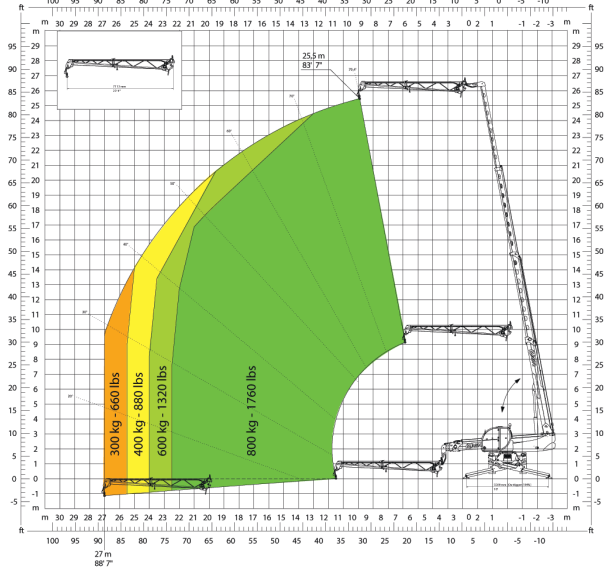
JIB 2,000 kg

J 2000



JIB WITH WINCH 800 kg

JW 800



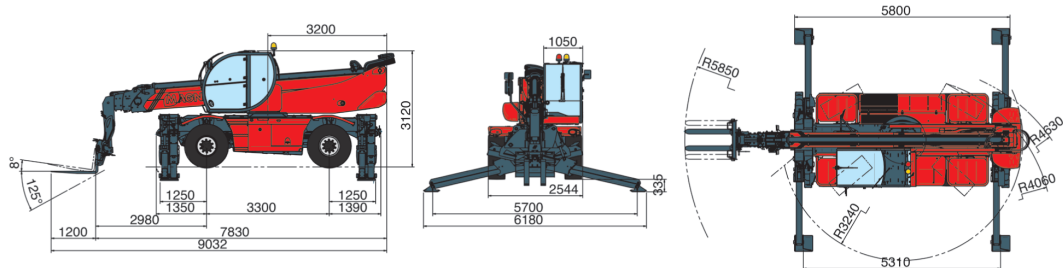
RTH 6.26 SH

MACHINE MODEL	Rotary telescopic handler	RTH 6.26 SH	
	Maximum lifting capacity	6,000 kg (center of gravity 600 mm)	
	Maximum lifting height	25.70 m	
	Rotation	360° (continuous)	
ENGINE	Type	Mercedes OM 934 LA Stage IV	Mercedes OM 904 LA Stage 3A
	Rated Power	129 kW - 175 HP @ 2,200 rpm	129 kW - 175 HP @ 2,200 rpm
	Maximum torque	750 Nm @ 1,200-1,600 rpm	675 Nm @ 1,200-1,600 rpm
	Displacement	5.13 l	4.25 l
	Cylinders	4 in line	4 in line
	Fuel	Diesel direct injection turbocharged	Diesel direct injection turbocharged
	Cooling System	Water – intercooler	Water – intercooler
TRANSMISSION	Type	Hydrostatic	
	Model	Bosch – Rexroth	
	Maximum pressure	500 bar	
	Displacement	Variable displacement pump electronically controlled Variable displacement motor	
	Gearbox	2 speed drop box forward-reverse	
AXLES AND BRAKES	Type	Axles with epicyclic reduction gear	
	Rear axle	Oscillating and steering with hydraulic locking	
	Front axle	Oscillating and steering with levelling +/- 10°	
	Service brake	Hydraulically activated, oil-immersed in-board multi-disc type on each axle	
	Parking brake	Hydraulic with negative action	
	Tyre sizes	445/65 R 22,5	
PERFORMANCE	Max. travel speed	41 km/h	
	Drawbar pull	80 kN	
	Gradeability	42%	
	Turning circle (at forks)	5,850 mm	
WEIGHTS	Total unladen	20,050 kg	
	Front axle unladen (boom retracted and lowered)	9,050 kg	
	Rear axle unladen (boom retracted and lowered)	11,000 kg	
TANK AND SYSTEM CAPACITIES	Diesel fuel tank	180 l	180 l
	AdBlue	40 l	N/A
	Hydraulic fluid	220 l	220 l
	Engine oil	20.5 l	20.5 l
	Coolant	36 l	36 l
HYDRAULIC CIRCUIT FOR MOVEMENTS	Max. working pressure	350 bar	
	Circuit type	Load sensing	
	Service pump	Bosch Rexroth – Variable displacement	
	Distributor for boom and turret movements	Danfoss – Electroproportional valve SIL 2	
	Distributor for stabilisers	Bosch Rexroth – Electro-hydraulics controls	
	Movements control	2 joystick Danfoss with two shafts with dead man safety device - Management with CAN bus technology	
STANDARDS MET	EN 13849: concerning the safety of all machine controls EN 13000: concerning standards for hydraulic cranes EN 280: concerning standards for mobile elevating work platforms FOPS/ROPS EU 2016/1628: concerning engine emissions standards EN 1459-2: concerning standards for slewing variable-reach trucks		

The data in this brochure are informative and subject to change without notice

REV08.A

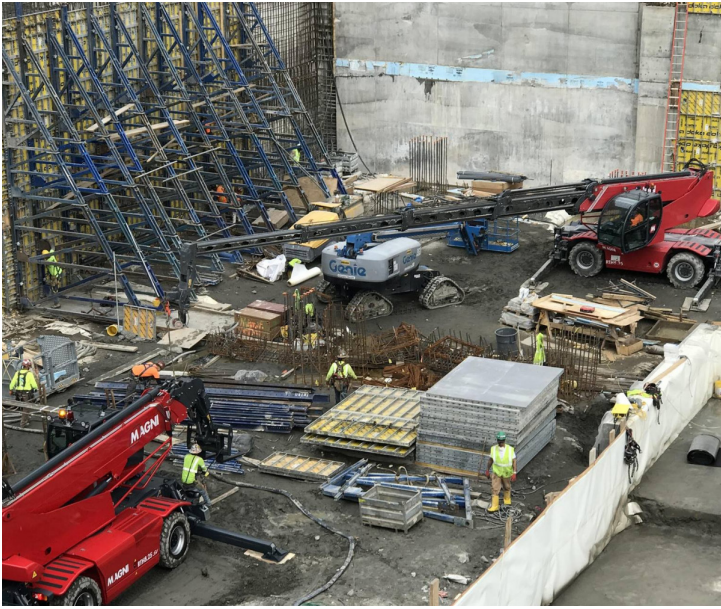
MAIN SECTORS



Magni Telescopic Handlers srl

Via Magellano, 22 - 41013 Castelfranco Emilia, Modena, Italia - Tel: +39 059 8630811 - Fax: +39 059 8638012
commerciale@magnith.com - www.magnith.com







Contact Justin Nixon
+61 0419 935 037
1300 444422
sales@liftequipt.com.au
www.liftequipt.com.au